

**Northern Richardson Mountains
Dall's Sheep Survey June 16 to 23, 2014
Field Summary**

Prepared by: Tracy Davison, ENR
Kristen Callaghan, GRRB

An aerial Dall's Sheep survey was conducted in the Northern Richardson Mountains between June 16th and 23rd. This was a co-operative project between Government of the NWT (GNWT), and Gwich'in Renewable Resources Board. The survey was flown with an Astar helicopter in 28.1hrs flight time. No flights were conducted June 17th, 19th and 22nd due to mechanical/weather issues. Good visibility with ceilings higher than the mountain peaks was necessary for the survey.

Observers scanned areas of sheep habitat above tree line as contour lines were flown with focus on high ridges (Figure 1). Attempts were made to classify all sheep either with binoculars during the survey or afterwards using photos.

Preliminary Results:

A total of 497 sheep were observed (Figure 2): 263 nursery sheep (ewes, yearlings, young rams), 91 lambs, 109 rams and 34 unclassified adult sheep compared to a total of 699 sheep observed in 2010.

Figure 3 shows the population trend of sheep observed during surveys in the Northern Richardson Mountains. Other wildlife were observed during the flights: 71 muskox (including 14 calves), 31 grizzly bears (including 12 cubs), 1 wolf, 1 wolverine, and 38 bull caribou (Figure 2).

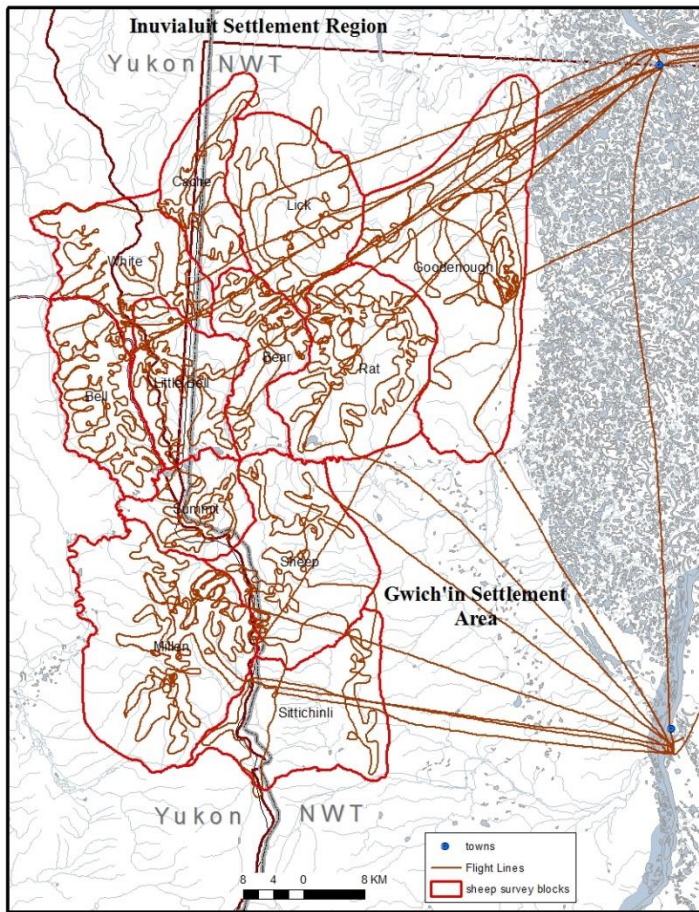


Figure 1: Study blocks, and flight lines for the survey.

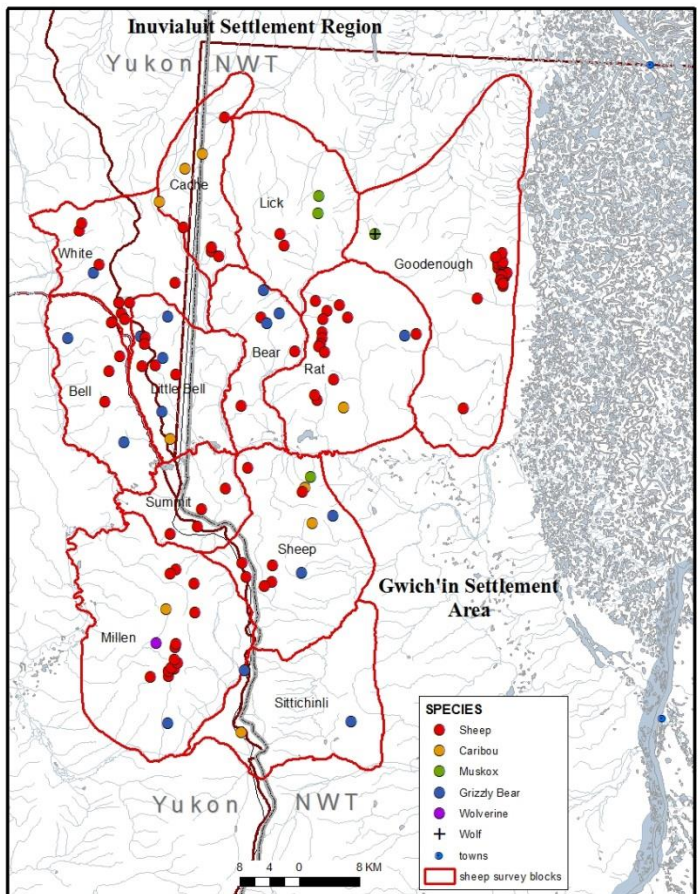


Figure 2: Wildlife Observations made during the survey.

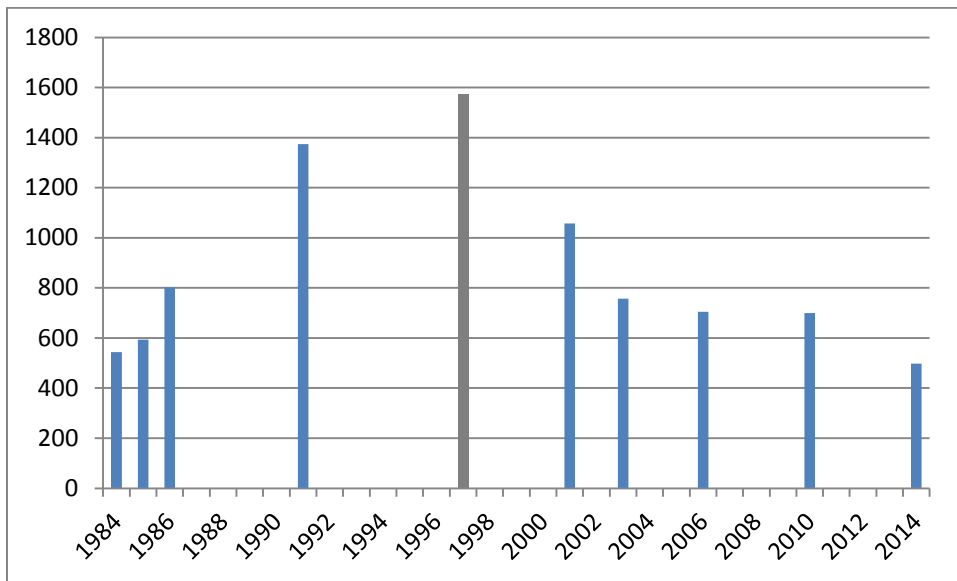


Figure 3: Population trend of Dall's sheep in the Northern Richardson Mountains.

Acknowledgments:

David R. White (Canadian helicopters) safely piloted the helicopter for this survey. We would like to thank Lazarus Edwards (Ehdiitat RRC), Cheryl Greenland (GRRB) and Jasmine Brewster (ENR) for assisting in the survey locating sheep.