



GWICH'IN RENEWABLE RESOURCES BOARD

news

SPRING 2015



Photo credit: K. Callaghan, GRRB

who we are The **Gwich'in Renewable Resources Board (GRRB)** was established under the guidance of the Gwich'in Comprehensive Land Claim Agreement (GCLCA) to be the main instrument of wildlife, fish and forest management in the Gwich'in Settlement Area (GSA).

our mandate The GRRB is the main instrument of wildlife, fish and forest management in the GSA. The Board acts in the public interest, representing all the parties to the Gwich'in Comprehensive Land Claim Settlement – the Gwich'in, the people of the Northwest Territories, and all Canadians.

our vision The GRRB is a model of renewable resources co-management. Working with its partners, the Board plays a leadership role in ensuring that the fish, forests and wildlife of the GSA remain healthy and sustainable.

our mission The GRRB works in cooperation with the Gwich'in people, governments and stakeholders and in accordance with the GCLCA to effectively protect, conserve and manage renewable resources in the GSA. It will do this in a respectful, transparent and inclusive manner, using the best available scientific and traditional knowledge.

who we work with The GRRB works with its co-management partners - Gwich'in Tribal Council (GTC), Government of the Northwest Territories (GNWT), Environment Canada (EC), Fisheries & Oceans Canada (DFO) - to communicate with the public and encourage conservation of renewable resources in the GSA. The GRRB works in collaboration with the four Renewable Resources Councils (RRCs) in the four communities (Inuvik, Tsiigehtchic, Fort McPherson, and Aklavik) to educate and promote sustainability of resources within the GSA.

in this issue:

| | |
|---|----|
| Executive Director's update | 3 |
| Message from the GRRB Chair | 4 |
| Board Member updates | 5 |
| Wildlife Biologist news | 7 |
| Fisheries Biologist news | 8 |
| Renewable Resources Manager news | 9 |
| Special Projects Biologist news | 10 |
| Office Manager news | 10 |
| Species at Risk Update | 11 |
| 2015/16 Wildlife Studies Fund Allocations | 12 |
| February 2015 Board meeting recap | 13 |
| Attention all Sheep Hunters! | 14 |
| Contact Us | 14 |

upcoming events

| | |
|----------------------|--|
| April 16 | Career Fair , Aklavik |
| April 20-23 | ACCWM Working Group Meeting , Yellowknife |
| May 12 | Sheep Community Monitoring Workshop , Aklavik |
| June | Nature Day GRRB school visits , GSA communities |
| June 9 | Sheep Community Monitoring Workshop , Fort McPherson |
| June 15-30 | Sheep monitoring project |
| June & July | Bank swallow surveys , GGRRC |
| Late June/early July | Small mammal monitoring (hare pellet counts), Inuvik |
| July 2-15 | Caribou photo surveys (Tuk. Pen., Cape Bathurst, Bluenose West) |
| August | Small mammal monitoring (small mammal trap transects), Inuvik |
| August | Char field work , Rat River, & Arctic Red River |



Amy Amos executive director

Drin Gwiinzii (good day)!

For those who do not know me, I am a Nihtat Gwich'in participant who was born in Inuvik and raised in Halifax, Nova Scotia with my father, Wallace Thompson. My mother is Susie Thompson (Linklater/Kaye) from the Kaye & Stewart family.

I have been with the GRRB since 2006. I was initially hired as one of their biologists, but was promoted into the Executive Director position in 2009. My main job is to ensure that the Board's direction is implemented at the staff level.

For staffing, external funding was secured for a term Species at Risk Biologist until March 31, 2016. This position is responsible for Species at Risk activities. Nataalka Melnycky left the role on November 28, 2014 and we hired Kaytlin Cooper on January 5, 2015.

I was asked to present at the GTC's Post-Secondary Academic Conference in St. John's, Newfoundland (March 23-27).

I presented on March 24th. My presentation was a testimonial on my life and how it was to be raised away from the Gwich'in Settlement Area and come back home to work. I also had the opportunity to sit in on the conference proceedings for a couple days. I was really impressed with how engaged these youth were. They were learning how to maneuver around a multi-building campus and were asking questions to all of the presenters. I am grateful for the opportunity to be a part of this conference.

I applied to and have been selected as a delegate to the Governor General's Canadian Leadership Conference (May 22 - June 5). I will have a unique opportunity to network, brainstorm and learn with young leaders from all over Canada. This year's theme is *Exploring Leadership and Innovation*.

I am an active participant in the Wildlife Act Working Group (WAWG). Since the final draft of the Wildlife Act was approved in Yellowknife in October 2014, ENR has enacted the Act and Phase 1 regulations. Phase 2 is the next step, with further WAWG meetings commencing this year.

I am also an active participant in the Conference of Management Authorities (NWT Species at Risk), serving as an alternate chair and a member of the Stewardship Committee. I attended the CMA

meeting in Yellowknife on January 13-14, 2015 with Board Chairperson Eugene Pascal and DFO Alternate Member Ron Allen.

Some of you may recall that I did some loche (burbot) liver research in my previous role as GRRB Fisheries Biologist. The goal was to investigate the occurrence of abnormal livers in the GSA. The project commenced in 2008 and 2009 with a community report shared on the results. Since accepting the ED position, I had less time to work on the data for more detailed reports but that has always been my intention. What I have done is worked with researchers that have the time to work on the data and write reports that could be published. So far, there are two publications with an international researcher on genetics. I have another in the works with Pete Cott, a researcher in Yellowknife, to publish a ecology-themed paper. There is a possibility of publications focused on movements and also on parasites.

This newsletter is a method for communicating with the broader public. Other communication materials we have are our website (www.grrb.nt.ca), Facebook page (www.facebook.com/grrb.nt.ca) and our annual Conservation Calendar. Please contact our office if you have any questions.

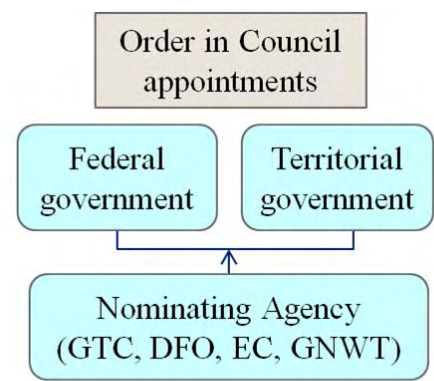
Hai Cho (thank you).



Photo credit: K. Cooper, GRRB

GRRB Board appointments

Eugene Pascal
Chairperson (GRRB)



Johnny Charlie
Member (GTC)



Bobbie Jo Greenland Morgan
Member (GTC)



TBA
Member (GTC)



Burt Hunt
Member (DFO)



Doug Doan
Member (EC/CWS)



TBA
Member (GNWT)



Charlie Snowshoe
Alternate (GTC)



Cindy Allen
Alternate (GTC)



Sarah Jerome
Alternate (GTC)



Ron Allen
Alternate (DFO)



TBA
Alternate (EC/CWS)



Jozef Carnogursky
Alternate (GNWT)



Eugene Pascal board chairperson

I am still temporarily living out of Fort Smith. I plan to be back to



Aklavik in June 2015, at which time I will be more available for GRRB meetings. I still work closely with Amy and participate as best I can.

In addition to my regular duties as Chair, I have been involved in the Wildlife Act Working Group and have participated in several teleconferences. On October 16, 2014, Amy and I met with GTC staff and GTC legal council to discuss the next steps toward a face-to-face meeting for this group.

The Advisory Committee for Cooperation on Wildlife Management (ACCWM) was formed to develop a management plan for Cape Bathurst, Bluenose-west and Bluenose-east caribou herds. *Taking Care of Caribou: the Cape Bathurst, Bluenose-West and Bluenose-East*

Barren-ground Caribou Herds Management Plan has now been signed by all parties, including the GRRB, and recommended to ENR.

Kristen and I attended the Technical Caribou Working Group meetings on October 9-10 and October 22-23, 2014. I also participated in four subsequent teleconferences and signed off on GRRB letters relating to this file.

The ACCWM letters support the plan, according to the orange zone for Bluenose-east. This herd is not harvested by the Gwich'in, but we are involved because of the joint management plan. The Sahtu and Tlicho took the lead and we supported this, as long as it complied with the approved management plan.

Johnny Charlie **gtc full board member**

Johnny attended the September GRRB meeting in Aklavik and participated in review and discussions at the November GRRB teleconference. He also attended the February Board meeting in Inuvik.

Bobbie Jo **Greenland Morgan** **gtc full board member**

Bobbie Jo attended the PCMB meeting in Aklavik with Janet. She also took part in the November teleconference call for the wildlife act working group on meat wastage. At the February Board meeting, she spoke about the politics around this issue. From the perspective of traditional knowledge (TK) and need at a national scale, the message is recognition that caribou are important to Gwich'in. She noted that this wasn't stressed in the NWT Wildlife Act, so it was a good

discussion. Some amendments were made as a result of her comments to the PCMB document.

Bobbie Jo was nominated by the GTC to Gwich'in Council International (GCI). The GCI is a permanent participant to the Arctic Council, a status held by Indigenous Peoples Groups. Their topics often focus on climate change and global warming, both of which impact the work of the GRRB.

Bobbie Jo also assisted in the review and editing of the 2015 GRRB Conservation Calendar.

Burt Hunt **dfo full board member**

Burt has been helping with our analysis of the Federal government's "Policy on the Development of New Commercial Fisheries." He has participated on calls and in the discussion of concerns related to the lack of presence by DFO, as well as plans for the upcoming season

with officials from Fisheries and Oceans Canada.

Burt participated in the recent Administrative Law training program in Yellowknife. He has also been providing input and insights on updates and revisions to the GRRB's Operating Procedures Manual.

Doug Doan **ec full board member**

Doug attended the two-day Board forum in Yellowknife on Eugene's behalf. The theme was *Transitions*. It was an interesting meeting - the first one to be chaired by GNWT and the first Board forum Doug had attended.

The Deputy Minister of ENR chaired the full meeting and did a good job. Most of the updates were associated with the changes relating to devolution. The federal government role in the forum has significantly changed. There were updates from the various Boards.



Photo credit: GRRB



Louis Cardinal, loche monitoring project. Photo credit: A. Amos, GRRB

Cindy Allen **gtc alternate member**

For the September Board meeting, Cindy provided written comments on some of the management plans discussed (e.g. short-eared owl and peregrine falcon) and provided written comments for the caribou COSEWIC status report. She noted that their information did not reflect a northern perspective and that some information was incorrect, so she tried to have that included and considered. She stated that Ottawa folks are not necessarily up to speed on what is happening in the north.

Cindy submitted comments regarding the Mackenzie Valley fibre optic plan, so that it would not just protect Species at Risk but would also consider other wildlife (e.g. frogs) potentially affected by that development project.

In the fall, Cindy attended the Porcupine Caribou Management Board (PCMB) meeting in Whitehorse, finding it to be

informative with very good things being done by that Board. They recently held their last meeting in Inuvik. She noted that they have a new website and information campaign. These are some things the GRRB may wish to look at in future, as they have been done well.

Jozef Carnogursky **gnwt alternate member**

During the February Board meeting, Jozef noted that it is very good to have other Board members appointed so the work can be shared. He has been helping out Cheryl and Amy with signatures when needed.

GNWT has put Jozef's name forward for full member. The alternate board member suggested is Tracy Davison, ENR.

Charlie Snowshoe **gtc alternate member**

Charlie has been a GRRB member since 2011. He is an elder from Fort

McPherson. Charlie participated in the September 2014 meeting in Aklavik and joined in on some teleconferences.

Ron Allen **dfo alternate member**

Since the meeting in Aklavik, Ron participated in staff hiring to replace Natalka. There were 50 applications for that job. The successful candidate, Kaytlin, was hired to begin work in January. Ron participated in the Conference of Management Authorities (CMA) meeting in Yellowknife in January and joined a November call when Burt Hunt was unavailable. He also reviewed some wolverine Species at Risk documents.

Sarah Jerome **gtc alternate member**

Sarah has recently been appointed to the GRRB as a GTC Alternate Member. Welcome, Sarah!



Kristen Callaghan wildlife biologist

Management Planning Taking Care of Caribou: the Cape Bathurst, Bluenose-West and Bluenose-East Barren-ground Caribou Herds Management Plan. I continue to be an active participant of the working group tasked with completing the management plan and associated action plans based on consultation input and direction from the GRRB and Advisory Committee for Cooperation on Wildlife Management (ACCWM). The completed plan was signed by the parties, including the GRRB, in November 2014 and recommended to government by the ACCWM. The working group is now addressing action planning for the three herds. A consultant has been hired to help the group write the action plans for all three herds, beginning with the Bluenose-East herd. The goal is to get all three action plans completed this calendar year.

Boreal Caribou Range Management Planning. Along with Nataika, I attended a meeting hosted by the GNWT-ENR on the development of a boreal caribou range management plan. We listened to presentations on the requirements of such a plan and participated in discussions on what initial steps are required in the GSA as part of this government-led initiative.

Northern Richardson Mountains Dall's Sheep Management Plan. Following the GRRB's 2014 fall motion approving the action table from the draft management plan and GRRB direction to staff, communication materials were shared publically via email, community posters, facebook and website updates. A letter was sent from the GRRB to all draft management plan partners, notifying them of the GRRB's motion and requesting that all parties renew working together on plan review and finalization. With Amy, I attended part of a meeting of the WMAC North Slope board in Inuvik and answered questions about the GRRB's motion. Plan Partners have since begun responding to the GRRB's letter which will help to move forward on management planning for this sheep population in 2015.

Research Northern Richardson Mountains Dall's Sheep Management Plan. The GRRB approved WSF financial support towards a pilot community monitoring project for sheep led by me and Tracy Davison (ungulate biologist, ENR-Inuvik). Workshops will be held in Aklavik and Fort

McPherson and active research undertaken in June for this project. We anticipate good community involvement in planning and research for this project. Project outcomes should be useful in management plan review and finalization, as a community monitoring program is an important element in the draft plan.

Small Mammal Surveys. This ENR project (hare pellet counts and small mammal trapping to evaluate small mammal population trends) will be done again this year with the help of GRRB summer staff, under my direction.

Caribou Surveys. In addition to some in-kind biologist support that I provided to ENR in March during collaring work, in July I will be lending a hand with caribou photo surveys by doing telemetry and note-taking during the flights. ENR's goal is to survey all caribou herds across the NWT at the same time this summer. I have provided biologist support for two prior ENR caribou photo surveys (2009 and 2012). I am happy to be working with staff from our ENR co-management partner again this year.



Refueling during a photo survey. Photo credit: GRRB

Kris Maier fisheries biologist

Management Planning I recently attended a week-long meeting in Winnipeg on the Rat River advisory process. We focused on the Babbage River in the Inuvialuit Settlement Region, on our Rat River, and on updating the research plan for the Dolly Varden Integrated Fisheries Management Plan (IFMP). Right now, our knowledge of Rat River char and our awareness of gaps in that knowledge are good.

Rat River Working Group public meetings will be held mid-June in Aklavik and Fort McPherson (exact dates to be announced). Please come out to these meetings to review and provide comments on the 2015 harvest allocation.

I attended the Beaufort Sea partnership meeting in Inuvik. Many different agencies participate. We are pushing for more knowledge on food webs in the nearshore Beaufort sea to see how char are behaving there.



Photo credit: Ellen Lea



Photo credit: Ellen Lea

Research Analysis of my summer field data is still in progress. I have received 2015/16 Wildlife Studies Fund (WSF) support to begin research on one new project and to continue previous research on Rat River char:

1) Arctic Red River Headwaters (ARRH) Fisheries Assessment

This project will attempt to determine what fish species are present in the ARRH and what areas are important fish habitat. Our goal is to use varying fisheries assessment techniques (angling, electrofishing, seining and gillnetting) to assess various suitable habitats for the presence of fish. Sites will be identified with the help of the local outfitter. Several discussions with the Gwichya RRC indicate that no TK is available on the ARRH to guide planning of this research.

2) Research and monitoring to support management of Rat River Dolly Varden char

Neil Mochnacz (DFO Winnipeg) and I hope to build on successes from 2014 to continue establishing a baseline for juvenile Dolly Varden occupancy in the Rat River watershed. In 2014, we successfully used electrofishing to determine the spatial distribution of juvenile and resident Dolly Varden in the Rat River headwaters. We learned the importance of tributaries in the upper Rat River watershed. Our initial study design in 2014 did not prioritize sampling tributary streams. We plan to visit many of these sites in 2015. Hopefully

we can further delineate juvenile Dolly Varden spatial distribution. Water temperature, habitat and benthic invertebrate monitoring will continue.

Technical Advice Along with other GRRB staff, I provided comments on the Mackenzie Valley Fibre Link project. My main concern with this project is their water withdrawal sources. A number of GNWT-proposed water sources did not meet the DFO Winter Water Withdrawal Protocol, designed to protect small lakes from being overdrawn. Part of the problem with this type of project is that fisheries surveys are not a requirement before construction begins, so managers have no way of knowing if, or how severely, a project will impact fish or habitat. TK indicates that many of the lakes in the project area have large, diverse fish populations and are very sensitive to disturbance. Unfortunately, this TK has not been confirmed in recent years, nor is it specific enough to use as a basis for comments on regulatory approvals.

However, our concerns were given recognition by the Mackenzie Valley Land and Water Board, who removed all of the water sources that did not meet DFO protocol from the GNWT water licence. Further efforts should be made to document fish species and distribution in this area because it is identified as an infrastructure corridor and will see further development in the future.

Janet Boxwell renewable resources manager

Management Planning I continue to work with our webmaster to update and maintain the GRRB Public Registry, including information related to public hearings, the Gwich'in Harvest Study, management plans, communication material and technical advice. The Registry demonstrates that the Board has met consultation commitments according to the consultation policy outlined in the GRRB Consultation Rules and Procedures. I am working on uploading the Species at Risk consultation timeline and process as per our Consultation Policy.

Policy Development/Review I have updated the GRRB's regulatory review process to reflect the Board's newly-adopted 45 day internal review policy. To help streamline our internal prioritization process, I created a new email account to receive documents for review. I have informed various regulatory and research agencies to use this new address: grrbreviews@grrb.nt.ca

Research I coordinate GRRB research priorities in consultation with staff, RRCs and co-management partners. I maintain a research summary database that helps me monitor the progress of research priorities and report back to the communities.



In November, I presented on the Gwich'in Harvest Study with a co-presenter and a community interviewer from Fort McPherson at the CIMP Results workshop in Inuvik.

At the January Regional RRC meeting, several motions were made concerning fisheries research of interest to RRCs. These will be added to research priority process for consideration at the September Board meeting.

I assisted University of Victoria researchers in their Wildlife Studies Fund application for Monitoring changes in muskrat health, habitat, and abundance in the Mackenzie Delta. Their funding request was approved at the February Board meeting.

Technical Advice I review regulatory and research applications in the GSA, assessing their impact on renewable resources and coordinating responses with the

assistance of the Board, staff and RRCs.

Liaison I consult with RRCs, government, Designated Gwich'in Organizations, government and co-management partners on a regular basis regarding research priorities and GRRB policies.

At the February Board meeting, I provided an update on the *Gwich'in Harvest Data Collection* program. The current program was initiated in 2010 to obtain the best information possible to make wildlife management decisions focused on managing for sustainability. Data collected through harvester surveys include: ungulate harvest, location, time, sex, age class, body condition, and harvester observations. Though participation levels are low (in 2013-2014, less than half of caribou harvesters on the list participated in the study), the survey is being used as a template for surveys in other regions (Porcupine caribou). I will continue to work with the RRCs to promote participation.

Other Activities I secured funding for staff and Board members to attend industry conferences, including the Northern Oil and Gas Research Forum and the Geosciences Forum in Yellowknife in November and the Arctic Oil and Gas Symposium in Calgary in March. I will also be coordinating staff attendance at career fairs in Inuvik and Aklavik in March and April.



Photo credit: J. Boxwell, GRRB

Kaytlin Cooper

special projects biologist

I am from the UK, where I studied Applied Ecology (B.Sc.) and Habitat Creation and Management (M.Sc.). I then worked as a park ranger for the government and as a field ecologist for an environmental consultancy, focusing on Species at Risk. I moved to Canada and worked with Stanley Park Ecology Society and Western Canada Wilderness Committee in Vancouver and studied Environmental Impact Assessment. I have recently studied Natural Resources Management.

I moved from Northern Ontario at the end of last year to work with the GRRB, starting in January. I have taken over from Natalka as Special Projects Biologist, working on Species at Risk.

Research Gwichya Gwich'in Renewable Resource Council – SARA Stewardship Fund Bank Swallow Surveys Natalka conducted bank swallow surveys with Leighanne Lennie from Gwichya Gwich'in RRC in Tsiigehtchic. I will be continuing the project by:

- Sending data to eBird;
- Writing a report and distributing it throughout the GSA; and
- Applying for funding for more surveys through the SAR Stewardship Fund.

Technical Advice I have reviewed the Boreal Caribou Framework and Recovery Strategy (territorial) and Short-eared Owl Management Plan (federal). I am currently reviewing the Proposed Listings for Northern Mountain Caribou (federal), Wolverine (federal), and Gypsy Cuckoo Bumble Bee (federal).

Upcoming work for me will include reviewing the following: Little Brown Myotis Recovery Strategy (federal), Boreal Caribou Recovery Strategy (territorial), Boreal Caribou Range Plans (federal), Barren-ground Caribou (excluding Dolphin and Union populations) Status Report (federal and territorial), Peregrine Falcon Management Plan (federal), and Olive-sided Flycatcher Recovery Strategy (federal).

Liaison I have collected and submitted RRC comments regarding the Boreal Caribou Recovery Strategy Framework (territorial). I attended RRC meetings to discuss the Proposed Listings for Northern Mountain Caribou, Wolverine and Gypsy Cuckoo Bumble Bee (federal).

I also travelled to Yellowknife in January to attend the Conference of Management Authorities. The purpose of the Conference is to provide direction, coordination and leadership on species at risk. The group operates by building consensus among Management Authorities.



Cheryl Greenland

office manager

A Nihtat Gwich'in participant from Inuvik, I have been with the GRRB since February of 2009.

Since our last newsletter, I have developed an electronic file management system for office computer and email. I am working with the ED to improve the filing system for expense claims.

Financially, I have been working with our project leads to meet financial reporting requirement for contribution agreements. I create tracking spreadsheets to remind project leads of the due dates for upcoming reports.

Every Board member and staff member (including casual employees) are now entered into the Ceridean payroll system. No cheques are issued, except for advances. We have learned to provide advances with the appropriate deductions.

I attended the 42nd Annual Geoscience Forum in Yellowknife this past November. I keep busy with doing all of the GRRB's financial and office administration.



Canadian Wildlife Service NWT Species at Risk Program Update

Proposed Listing Consultations for Species within the Gwich'in

Settlement Region In November 2013 and May 2014, COSEWIC (Committee on the Status of Endangered Wildlife in Canada) assessed several species. The following assessed terrestrial species are found within the Gwich'in settlement area:

Northern Mountain Caribou -
Re-assessment - Confirmed Special
Concern (2014)

Wolverine (*Gulo gulo*); Western
population - Re-assessment -
Confirmed Special Concern (2014)

Gypsy Cuckoo Bumble Bee
(*Bombus bohemicus*) - New -
Endangered (2014)

COSEWIC completed its final status and assessment reports and provided them to the Minister of the Environment. The Minister then has 90 days to post a response on the Species at Risk Public Registry, providing information on the scope of any consultations and the timelines for action. This is known as the response statement. Consultations for a group of species are launched with the posting of the response statements. The response statements for these species were posted on January 13, 2015.

In the NWT, we are working to engage the communities and have begun community consultations. On December 22, 2014, a consultation package was sent out asking for community input into the proposed listing of the three species found within the GSA; this material was also sent to the GRRB. The consultation period ended on February 27, 2015.

Short-eared Owl Management

Plan Short-eared owl was listed as a species of Special Concern under the federal Species at Risk Act in 2012. Environment Canada staff are preparing a management plan for the Short-eared Owl. A package with information on an early draft of the management plan was sent to the communities within the range in September 2014. The GRRB provided comments on an early draft of the management plan, and these comments have been incorporated. A revised draft has been sent to the GRRB for review.

Little Brown Myotis (Bat)

Recovery Strategy The Little Brown Myotis, a bat species, is a mammal that was emergency-listed as Endangered under the federal Species at Risk Act in November 2014; therefore, the recovery strategy will be due in November 2015. Environment Canada staff are in the early stages of developing a recovery strategy for the Little Brown Myotis. The governments, wildlife management boards, and communities within the range will receive an early draft of the Recovery Strategy for the Little Brown Myotis in Canada. The package will include a PowerPoint presentation. This early draft is being sent to obtain input and feedback at the beginning of the process.

A first jurisdictional review of the document and then the second review along with a request for approval and support to post the recovery strategy on the Species at Risk Public Registry for a 60-day public comment period will be sent in the coming months.

Environment Canada Three-Year Recovery Document Posting

Plan On December 23, 2014, Environment Canada posted a Three-

Year Recovery Document Posting Plan on the Species at Risk Public Registry identifying the species for which proposed recovery strategies and management plans will be posted each year.

In the NWT, Environment Canada is developing and posting the proposed recovery documents for 14 species with ranges within the NWT. Four of these are confirmed within the Gwich'in Settlement Region:

Olive-Sided Flycatcher (Threatened)
Peregrine Falcon (Special Concern)
Short-eared Owl (Special Concern)
Little Brown Myotis (Endangered)

In 2015-2016, recovery documents will be required for Short-eared Owl and Little Brown Myotis. Environment Canada will engage the GRRB for the jurisdictional technical review and then approval and support to post proposed recovery documents on the Species at Risk Registry.

Aboriginal Fund for Species At Risk (AFSAR)

The GRRB/McGill University led project entitled "*A community-led inventory of muskrat history, health, and predation patterns in the Mackenzie Delta*" was approved for funding under the AFSAR – Prevention Stream in the 2014-2015 fiscal year. The purpose of this project is to document the history of muskrat populations in the Mackenzie Delta, inventory individual health status, and document local patterns of predation to identify potential threats to Delta muskrats from human activities and predators.

The objective is to develop more informed conservation decisions in the Delta due to an improved understanding of muskrat history, health, and predator patterns.

2015/16 Wildlife Studies Fund (WSF) Allocation

Motion GRRB15-15 from the February 2015 Board meeting approves the following 2015/16 WSF allocations:

| Project Name | Funded by GRRB |
|---|----------------------------------|
| Internal Requests | |
| Arctic Red River headwaters fisheries assessment | \$18,000 |
| Research and monitoring to support management of Rat River Dolly Varden char | \$20,000 |
| Dall's sheep monitoring pilot project | \$10,000 |
| Youth & Communications Program | \$5,000 |
| External Requests | |
| Arctic Borderlands community monitoring, interviews and youth workshop | \$10,000 |
| Population abundance and index of demographics of Dolly Varden from the Rat River | \$9,000 |
| Monitoring changes in muskrat health, habitat, and abundance in the Mackenzie Delta | \$10,000 cash \$5,000 in-kind |
| Scholarship Requests | |
| JES Scholarship application | \$1,000 |
| JES Scholarship application | \$1,000 |
| JES Scholarship application | \$1,000 |
| In-Kind Requests | |
| Barren-ground caribou monitoring - Kristen Callaghan time | Yes |
| Barren-ground caribou photocensus - Kristen Callaghan time | Yes |
| Small Mammal & Hare Pellet surveys - Kristen Callaghan time | Yes |



February Board Meeting

The GRRB held its winter face-to-face meeting in Inuvik on February 17-19. At this Board meeting, the agenda included: Board and staff updates (provided in this newsletter); Caribou management; Dall's sheep management; DFO Operations update and review of commercial fishing policy; action items review; an ongoing review and tracking of GRRB commitments and progress; Wildlife Studies Fund investment update and Board discussion; research proposals and funding decisions; RRC discussions with the GRRB; Species at Risk Act appointments and a presentation on amendments (as described in this newsletter); review and approval of the GRRB's 2015 operating budget and workplan; and a discussion of amendments to the GRRB's Operating Procedures.

Taking Care of Caribou The Cape Bathurst, Bluenose-West and Bluenose-East Barren-ground Caribou Herds Management Plan was signed and submitted to government in November. See [Page 6](#) for Kristen's update.

Dall's Sheep Management Plan The Board will be holding a teleconference to review this management plan and strategize on moving it forward. See [Page 6](#) for Kristen's detailed update.

Species at Risk Act James Firth was reappointed to the Species At Risk Act Committee (Motion GRRB 15-06) with Cindy Allen appointed as alternate.

The Board received a presentation on proposed federal amendments to the Act. GRRB staff have begun community consultation on these amendments, following our consultation policy. See [Page 10](#) for further details.

Wildlife Studies Fund (WSF) Investment and 2015/16

Allocation The Board will be reviewing a list of socially responsible oil and gas companies for possible reinvestment of the WSF portfolio.

Each year, the GRRB provides Wildlife Studies Fund support to various organizations to conduct projects that will assist with renewable

resources management in the GSA. In addition to funding, the GRRB may also provide in-kind support (e.g.: office space, office support, vehicles).

This year, \$85,000 was withdrawn from the WSF to support a variety of projects that align with GRRB research interests. The WSF also funded three student recipients of the Jim Edwards Sittichinli Scholarship. See [Page 11](#) for a full list of approved projects/scholarships.

Policy on the Development of New Commercial Fisheries

DFO led a review of their emerging commercial fishing policy. The objective of the policy is to ensure that new commercial fisheries are developed in a manner that provides for the conservation and sustainable use of aquatic species and ecosystems and that supports economic opportunities in the fishing industry and fishing communities.

This policy recognizes that the development of new fisheries requires a cooperative approach by governments, industry, Aboriginal organizations, and other parties that effectively blends science, management and business principles. It applies to the development of new commercial fisheries for all currently unmanaged species or stocks that are naturally present in the ecosystem and that do not form part of an existing fisheries management plan. It does not apply to requests from Aboriginal people for new fisheries for food, social and ceremonial purposes. Where Land Claim Agreements are in effect, the need for the role of an advisory committee will vary.

DFO are holding consultations Canada-wide. They have sent communications across the country and are requesting comments.

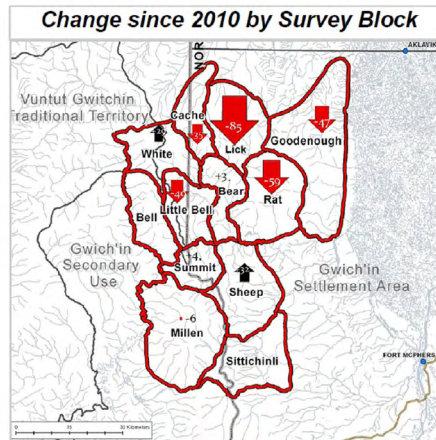
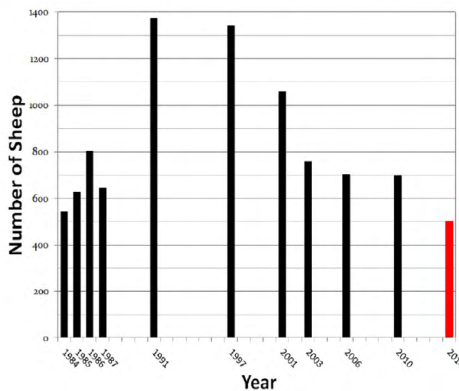


Attention all Sheep Hunters:



The 2014 survey results show a 29% decline to less than 500 sheep (only 404 adults and 92 lambs).

Population Composition by Survey Year:



The Gwich'in Renewable Resources Board requests all sheep hunters and Parties to the draft management plan immediately join in these actions:

- Voluntary Closure of beneficiary harvest
- Legislated Closure of all other hunting
- Required Harvest Reporting
- Community Monitoring of Lamb Recruitment



For further information visit our website at grrb.nt.ca
or contact our office (867-777-6600; office@grrb.nt.ca)
or your local Gwich'in Renewable Resources Council

GET IN TOUCH!

Gwich'in Renewable Resources Board

PO Box 2240
Inuvik, NT X0E 0T0
Tel: 867.777.6600
Fax: 867.777.6601
www.grrb.nt.ca

Executive Director

Amy Amos 867.777.6602
aamos@grrb.nt.ca

Office Manager

Cheryl Greenland 867.777.6600
office@grrb.nt.ca

Wildlife Biologist

Kristen Callaghan 867.777.6610
kcallaghan@grrb.nt.ca

Fisheries Biologist

Kris Maier 867.777.6607
kmaier@grrb.nt.ca

Renewable Resources Manager

Janet Boxwell 867.777.6615
jboxwell@grrb.nt.ca

Special Projects Biologist

Kaytlin Cooper 867.777.6612
kcooper@grrb.nt.ca

Please call your RRC for monthly meeting times:

| | |
|--------------|--------------|
| Ehdiitat RRC | 867-978-2336 |
| Tetlit RRC | 867-952-2330 |
| Gwichya RRC | 867-953-3608 |
| Nihtat RRC | 867-777-6650 |

