

Research and Management Interests for the GSA

The Gwich'in Renewable Resources Board records interests shared by community members, Gwich'in Renewable Resources Councils, and co-management partners for the Gwich'in Settlement Area (GSA). The GRRB uses these interests to set **Research Priorities** for implementation or research support on a five-year cycle.

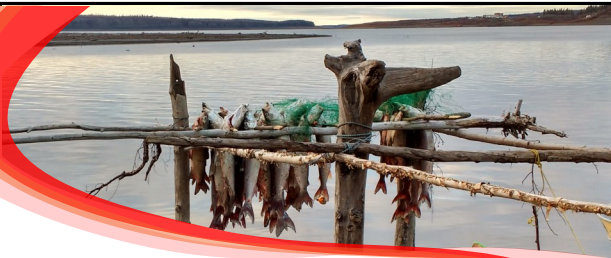
As not all interests can be feasibly accomplished by the GRRB, a secondary use of this Interests list is to share it with partners, agencies and researchers who may be able to conduct the necessary research or work required.

Report prepared by Kristen Callaghan. Photo credits: pg 1 S. Lord, GRRB; pg 2,4-9 K. Callaghan, GRRB; pg 3 K.Callaghan

Fishery Interests

Species	Population	ID	Interest
Sruh Coney/ Inconnu	All	FI-17-036	Digital Data Resources -Including Traditional Knowledge
		FI-17-035	Stock Condition and Life Stage Distribution by Area and Habitat
	Arctic Red River	FI-17-037	Spawning Locations
	Mackenzie River	FI-17-014	Seasonal Distribution and Range
Dhik'ii Dolly Varden Char	All	FI-17-026	Aquatic Habitat and Ecosystem Interactions among Aquatic Resources
		FI-17-028	Assessment of Cumulative Effects of Development on Aquatic Resources
		FI-17-027	Climate Change Impacts
		FI-17-029	Contaminants, Disease and Parasites
		FI-17-032	Demography: Population Substructure
		FI-17-033	Predator Monitoring
		FI-17-031	Recruitment: Role of Resident Males
		FI-17-030	Research Methods: New Techniques in Population Estimation
		FI-17-003	Youth Education -Curriculum Development and Implementation
	Arctic Red River	FI-17-008	Baseline Data: Population Status and Trends
	Rat River	FI-17-002	Habitat Monitoring & Assessments: Critical Habitats, New Habitats
		FI-17-007	Health Monitoring -Kidney Samples
		FI-17-004	Population Monitoring
	Big Fish River	FI-17-005	Stock Identification and Composition
	Shingle Point	FI-17-001	Stock Identification and Composition
	Vittrekwa River	FI-17-006	Stock Identification and Composition

Research and Management Interests for the GSA



Fishery Interests *Continued*

Species	Population	ID	Interest
Treeluk Herring/Cisco	All	FI-17-020	Demography and Population Trend
Perches -Walleye	All	FI-17-019	Demography and Population Trend
Vit Lake Trout	Airport Lake	FI-17-010	Development Impacts to Habitat
Vit , Srijaa, Eltin Lake Trout, Grayling, Pike	Sandy Lake, Travaillant Lake	FI-17-018	Harvest Sustainability -Sport Fishing
Chehluh Loche	Mackenzie Delta	FI-17-012	Genetics Parasites
		FI-17-013	Health and Contaminants
Chii Salmon	Mackenzie River	FI-17-011	Abundance and Distribution Harvest Sustainability
Luk digaii/Luk zheii and Shruh Whitefish and Coney	Arctic Red, Mackenzie & Peel Rivers	FI-17-017	Diet and Ingestion of Sand
		FI-17-016	Environmental and Seasonal Correlates of Flesh Firmness
		FI-17-015	Health and Disease
	Peel River	FI-17-034	Migration Timing Stock Health Critical Habitats
Luk digaii/Luk zheii, Dalts'an, Shruh, Vit, Treeluk Broad Whitefish, Crookedback/ Lake Whitefish, Coney, Lake Trout, Herring/Cisco	All	FI-17-009	Baseline Data: Population Status and Trends
Luk Fish - General	Campbell Creek, Campbell Lake	FI-17-023	Abundance and Distribution
	Headwaters Arctic Red River to Tsiigehtchic	FI-17-025	Predictions of Development Impacts Downstream
	Nagwichoonyik (Mackenzie River), & Chii Tiet (drains into M. River upstream of Tsiigehtchic)	FI-17-021	Range and Distribution
	Peel Channel, Mackenzie Delta, Arctic Red River	FI-17-024	Water Level Fluctuations & Impact to Fish
Fish Habitat - General	Mackenzie River, Arctic Red River	FI-17-022	Habitat -Erosion Correlates





Research and Management Interests for the GSA

Forestry Interests

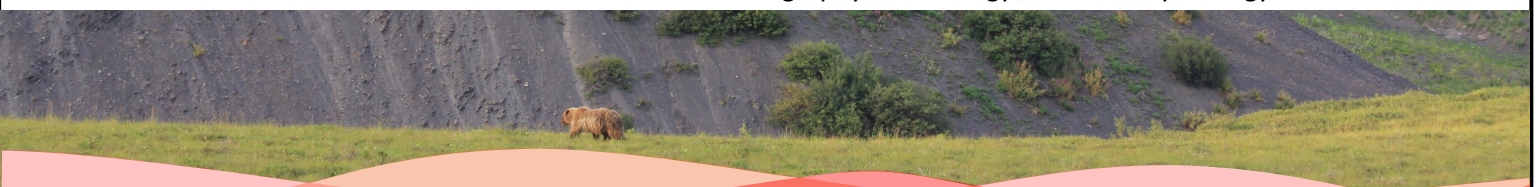
Category	ID	Interest
Development	FO-17-012	Development (Tree Clearing) Impacts to Forest Recruitment & Regeneration
Education	FO-17-020	Promotion of Traditional Harvest Techniques using On The Land programs
Fire	FO-17-004	Fire Behaviour and Correlates
Flooding	FO-17-005	Flood Impacts Flood Frequency
Habitat	FO-17-017	Critical Habitat Mapping & Integration with Forest Management
	FO-17-008	Range and Establishment Status of Introduced Vegetation
	FO-17-002	Ecosystem Vegetation Classification
	FO-17-010	Forest Vegetation Inventory
Forest Use	FO-17-003	Sustainable Forestry Harvest Levels
	FO-17-007	Historical Commercial Use of Forests and Forest Products Commercial Expansion Assessment
	FO-17-009	Recommend Forest Harvest Distance from Cabins
Non-Timber Forest Products	FO-17-006	Forest Harvest Impacts to Wildlife
	FO-17-018	Impact of Forest Use Activities to Wildlife & Habitat
	NM-17-001	Berry Harvest Sustainability
	NM-17-002	Medicinal Plants Harvest Sustainability
	NM-17-003	Wild Rhubarb & Bear Root Population Status & Distribution Changes
Monitoring	FO-17-016	Forest Health Monitoring & Communication
	FO-17-015	Insect Monitoring & Reporting
	FO-17-014	Assessment of Forest Stressors (Insects and Disease)
	FO-17-013	Forest Monitoring: Impacts of Insects and Floods
	FO-17-001	Impact of Spruce Budworm and Pine Beetle
Techniques	FO-17-011	Alternative Tree Aging Techniques

Research and Management Interests for the GSA



Wildlife Interests

Wildlife	Species	ID	Interest
Amphibians Neeghaii	Wood frog	WI-17-038	Status, Ecology, Habitat, Threats & Cumulative Effects
		WI-17-040	Stewardship of Species and Habitat
		WI-17-039	Traditional and Community Knowledge
Birds Chiniitra'nh	Peregrine Falcon Campbell Hills	WI-17-033	Localized Development Impacts
Yeezhah	Snipe	WI-17-037	Population Status
Elik dzhii	Songbirds	WI-17-035	Status of Populations & Explanation of Trends
& Deetrin'	Songbirds & Ravens Aklavik Region	WI-17-036	Localized Community Ecology (Impact of ravens)
& Sheihtsoo	Songbirds & Swallows	WI-17-034	Localized Abundance and Distribution (M. Delta & Peel River)
Furbearers Shih	Grizzly bear Dempster border region	WI-17-028	Demography and Ecology
	Grizzly bear All GSA	WI-17-073	Demography and Research Requirements
		WI-17-027	Demography and Survey Requirements
		WI-17-079	Education and Communication: Bear Safety Practices
		WI-17-078	Education and Communication: Ecology and Management
		WI-17-079	Habitat Protection - Via Development Proposals and Management Plans Review
		WI-17-075	Knowledge Sharing & Collection; Management Plan Integration
		WI-17-026	Management Actions -Status Assessment
		WI-17-076	Mortality Assessment; Harvest Access; Outfitting Requirements and Implementation
		WI-17-074	Prioritize Habitat Studies and implement as required
Tsee'	Beaver	WI-17-030	Demography and Community Ecology
Dzan	Muskrat	WI-17-031	Demography and Trend
Truh	Otter	WI-17-025	Demography and Ecology ; Community Ecology

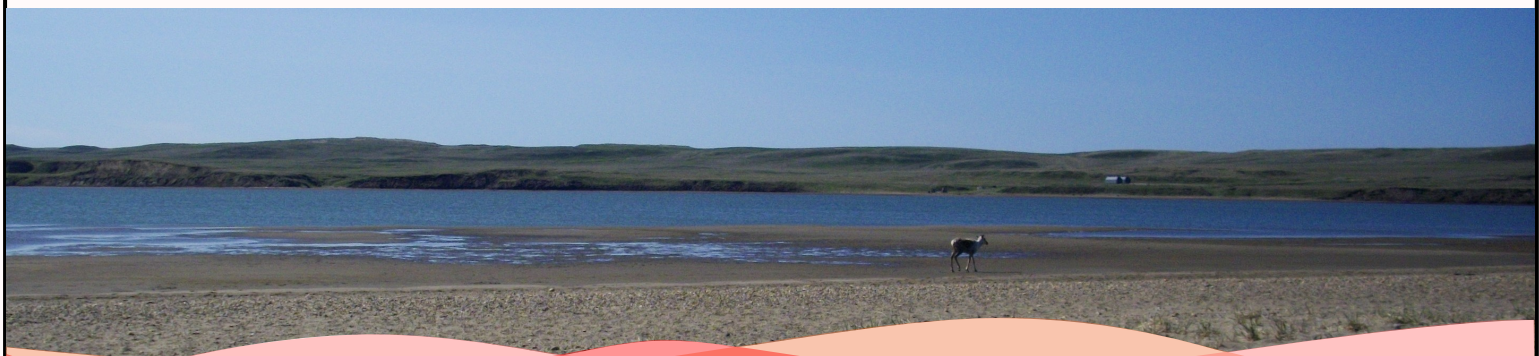




Research and Management Interests for the GSA

Wildlife Interests *Continued*

Wildlife	Species	ID	Interest
Geh	Snowshoe Hare Fort McPherson region	WI-17-032	Demography and Trend
Zho'h	Wolf	WI-17-029	Demography and Impacts to Prey (Caribou & Moose) Populations
Insects	Invasive Insects	WI-17-041	Status of Invasive Species
Ungulates Vàdzaih	Caribou -Barren ground Bluenose-West	WI-17-049	Harvest Reporting Program
		WI-17-047	Data Compilation
		WI-17-048	Alternatives and Programs
		WI-17-046	Total Allowable Harvest
		WI-17-051	Recommendation of Community Based Monitoring Program(s)
		WI-17-052	Implementation of Management Action: Support of Scientific Monitoring
		WI-17-050	Implementation of Management Action: Traditional Knowledge Documentation and Collection Requirements
		WI-17-004	Demography
		WI-17-002	Demography
		WI-17-056	Evaluation of Harvest Data Program
		WI-17-001	Harvest Data Collection
		WI-17-054	Harvester Education Program
		WI-17-043	Localized Impacts of Development (Eagle Plains) to Migration and Distribution
		WI-17-003	Migration and Range
		WI-17-055	Youth Harvester Education Program



Research and Management Interests for the GSA



Wildlife Interests *Continued*

Wildlife	Species	ID	Interest
Ungulates Vàdzaih	Caribou -Boreal Woodland	WI-17-005	Community Ecology
		WI-17-006	Habitat and Fire Ecology
		WI-17-007	Habitat -Regeneration and Restoration after human disturbance
		WI-17-008	Habitat-Impacts of Climate Change
	Caribou -Northern Mountain Woodland Bonnet Plume	WI-17-009	Demography
Vàdzaih	Bonnet Plume & Redstone herds	WI-17-044	Localized Demography and Ecology
Divii	Dall's Sheep Northern Richardson Mountains	WI-17-068	Community Ecology (muskox/moose/sheep)
		WI-17-015	Demography Determine Demographic Indicators
		WI-17-019	Population Size and Composition
		WI-17-058	Population Trend -Local & Traditional Knowledge
		WI-17-012	Recruitment & Composition
		WI-17-057	Community Based Monitoring Program Design
		WI-17-011	Community Based Monitoring Program Coordination
		WI-17-013	Education and Communication
		WI-17-071	Youth School Visits
		WI-17-069	Youth Harvester Education Program





Research and Management Interests for the GSA

Wildlife Interests Continued

Wildlife	Species	ID	Interest
		WI-17-067	Habitat Analysis of Historical Data
		WI-17-066	Monitoring Evaluation and Recommendation
		WI-17-065	Literature Review: Key Risks to Range
		WI-17-018	Range Assessment Requirements
		WI-17-020	Risks to Range
		WI-17-021	Impacts of Development to Range
		WI-17-017	Sensitivity Assessment
		WI-17-062	Harvest Monitoring
		WI-17-016	Harvest Impacts and Sustainability
		WI-17-064	Health Literature Review: Population Health Indicators
		WI-17-022	Risks
		WI-17-059	Disease and Parasite Monitoring
		WI-17-061	Population Genetics
		WI-17-063	Population Viability Analysis
		WI-17-023	Predator Impact
		WI-17-060	Prey and Predator Ecology (Black Mountain/ Chigwaazraii)
		WI-17-014	Status Report Update
		WI-17-072	Traditional Knowledge Collection
		WI-17-070	Youth Research Participation



Research and Management Interests for the GSA



Wildlife Interests Continued

Wildlife	Species	ID	Interest
Ungulates Dinjik	Moose	WI-17-082	Consultation and Traditional Knowledge Collection (unstudied regions of GSA)
		WI-17-083	Demography: Knowledge Compilation -Population Level
		WI-17-093	Population size and composition
		WI-17-024 b	Population Trend
		WI-17-081	Productivity & Survivorship Indices
		WI-17-087	Evaluation of research methods
		WI-17-094	Productivity and Survivorship Data Collection
		WI-17-080	Regional Demography -Population size and composition
		WI-17-089	Aklavik Region
		WI-17-086	Fort McPherson Region
		WI-17-091	Mackenzie Delta Region
		WI-17-090	Regional Demography -Productivity & Survivorship Research as needed Aklavik Region
		WI-17-092	Mackenzie Delta Region
		WI-17-084	Demography: Knowledge Compilation - Species Level Population Size, Composition, Productivity, and Survivorship
		WI-17-097	Habitat and Range Use Evaluation of research methods
		WI-17-098	Traditional and Local Knowledge Collection
		WI-17-100	Map important habitats
		WI-17-099	Implement Studies





Research and Management Interests for the GSA

Wildlife Interests *Continued*

Wildlife	Species	ID	Interest
		WI-17-096	Habitat Assessment & Mapping Requirements
		WI-17-095	Habitat Assessment
		WI-17-088	Harvest Sustainability & Modelling
		WI-17-101	Harvest Sustainability & Modelling
		WI-17-024a	Management Actions -Status Assessment
		WI-17-085	Population Status Review and Input
Dachan tat aak'ii	Muskox	WI-17-010	Demography -(Northern Richardson Mountains) Population Size and Composition
All Wildlife			
Nin	Fort McPherson region	WI-17-045	Localized Distribution Patterns and Changes
	GSA	WI-17-042	Slumping Impacts to Wildlife Habitat use and Distributions

Non-Mandate Interests -These interests fall outside of the mandate of the GRRB and have been brought forward by RRCs and/or Community members for outside agency or researcher implementation

Category	Interest
Erosion - Peel River	NM-17-007 Permafrost Slumping
Traditional Foods	NM-17-005 Relationship of Country Foods with Well-Being Indicators
Berries	NM-17-001 Harvest (locations and consumption safety)
Medicinal Plants	NM-17-002 Harvest (locations and consumption safety)
Water Quality	NM-17-006 Water Quality and Human Safety (H. pylori & Contaminants)
	NM-17-008 Human Health Impacts of Upstream Development (Arctic Red River to Tsiigehtchic)
	NM-17-009 Water Quality and Human Safety (Impacts of Industry and Seismic Lines)
	NM-17-011 Water Levels & Trends (Rivers), Cause of Fluctuations
Wildlife Policy	NM-17-010 NWT Legislation-Drafting Methods: Regulations for Use of Traditional Knowledge in Research

